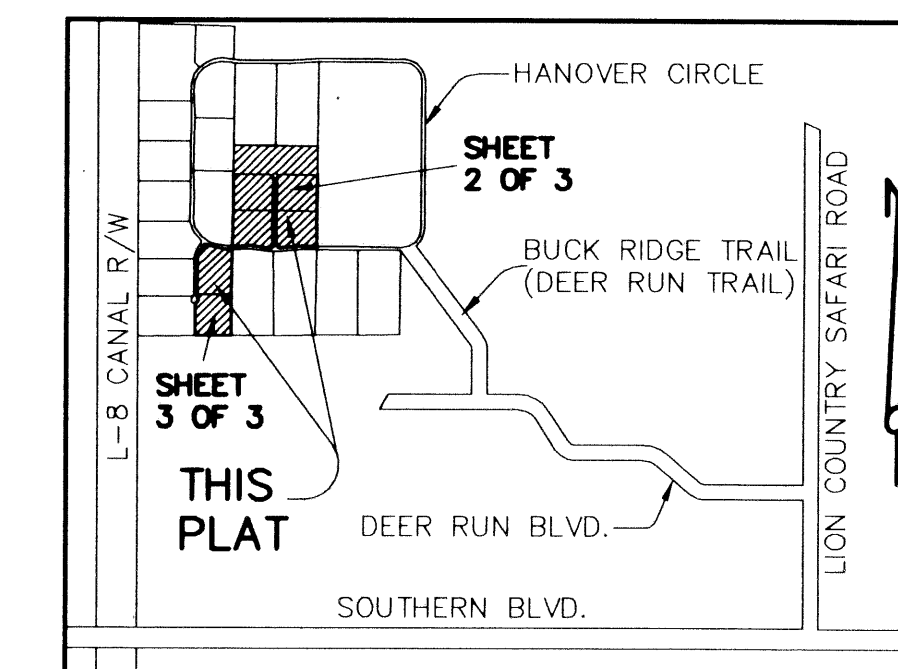


"WHITE FENCES EQUESTRIAN ESTATES" RE-PLAT NO. 1

BEING A REPLAT OF LOTS 6, 7, 8, AND 13 "WHITE FENCES EQUESTRIAN ESTATES" AS RECORDED IN PLAT BOOK 85, PAGES 175 THROUGH 177 OF THE PUBLIC RECORDS OF PALM BEACH COUNTY, FLORIDA, LYING IN SECTION 16, TOWNSHIP 43 SOUTH, RANGE 40 EAST

THIS INSTRUMENT WAS FILED FOR RECORD AT _____ M. THIS _____ DAY OF _____, 20____ AND DULY RECORDED IN: PLAT BOOK _____ ON PAGE _____ DOROTHY WILKEN CLERK CIRCUIT COURT. BY: _____ DEPUTY CLERK.



LOCATION MAP NOT TO SCALE

CHORD DATA(P)		
CHORD #	CHORD BEARING	CHORD LENGTH
CHD. #1	N 01°36'50" W	54.20'
CHD. #2	N 86°34'01" E	397.38'
CHD. #3	S 86°50'49" E	200.08'
CHD. #4	N 83°26'43" E	32.00'
CHD. #5	N 86°34'50" W	505.22'
CHD. #6	S 88°13'56" E	150.45'
CHD. #7	N 66°58'36" W	201.63'
CHD. #8	S 17°48'19" W	194.21'

LEGEND

- CHD. = CHORD
- D = CENTRAL ANGLE
- D.E. = DRAINAGE EASEMENT
- L = ARC LENGTH
- LB# = LICENSED BUSINESS NUMBER
- N/D = NAIL AND DISC
- NR = NON-RADIAL
- O.R.B. = OFFICIAL RECORD BOOK
- P.R.M. = PERMANENT REFERENCE MONUMENT
- P.B. = PLAT BOOK
- P.B.C.R. = PALM BEACH COUNTY RECORDS
- PG. = PAGE(S)
- (P) = PER THE PLAT OF "WHITE FENCES EQUESTRIAN ESTATES" AS RECORDED IN PLAT BOOK 85, PAGES 175-177, P.B.C.R.
- R = RADIUS
- R/W = RIGHT OF WAY
- SEC. = SECTION
- U.E. = UTILITY EASEMENT
- ⊕ = CENTERLINE
- ① = SEE COORDINATE TABLE SHEET 1 OF 3 FOR GRID VALUE

THIS INSTRUMENT WAS PREPARED BY: David A. Bower, P.S.M. #5888 in the offices of Dennis J. Leavy and Associates, Inc. 460 Business Park Way, Suite D Royal Palm Beach, Florida 33411 (561) 753 - 0650

DENNIS J. LEAVY & ASSOCIATES, INC. LAND SURVEYORS AND MAPPERS

460 BUSINESS PARK WAY • SUITE D • ROYAL PALM BEACH, FL. • 33411

PHONE: (561) 753-0650 FAX: (561) 753-0290

SCALE: 1" = 100' CHECKED BY: D.J.L. DATE: 11/06/02

DRAWN BY: D.A.B. JOB NO.: 02-110 (CAD FILE 02-110PLAT)

